

USAID Country Health Statistical Report

Haiti

October 2003



Table of Contents

1. About the Report

2. Country Profile

I. Statistical Overview

- *Demographic Indicators*
- *Socioeconomic Indicators*
- *Family Planning Indicators*
- *Maternal Health Indicators*
- *Child Survival Indicators*
- *HIV/AIDS Prevention Indicators*
- *Infectious Diseases Control Indicators*

II. Trends in Health Indicators

- *Current and Projected Population by Age and Sex*
(Figure 1 and Table 1.1)
- *Population Estimates and Projections*
(Table 1.2)
- *Estimated Total Fertility Rate per Woman*
(Figure 2 and Table 2)
- *Infant Mortality Rates / Under-5 Mortality Rates*
(Figure 3 and Table 3)
- *Vaccination Coverage (DPT3) Trends*
(Figure 4 and Table 4)
- *Contraceptive Prevalence Rates - Married Women*
(Figure 5 and Table 5)

3. Data Notes

4. Sources

About the Report

Released October 2003

This report is one of a series of Country Health Statistical Reports produced on behalf of the United States Agency for International Development (USAID) by the Population, Health and Nutrition Information (PHNI) Project. Each profile contains statistical data on current health conditions, population dynamics, health and family planning behavior, and health and population trends in a given developing country. Information is compiled from PHNI's health statistics database, which draws data from a diverse range of sources listed at the end of this profile.

Hard copy editions of USAID's profiles are available from PHNI'S publications department. Reports are available on the USAID Global Health Web site in Portable Document Format (pdf). Any feedback you have on the content or presentation of this report would be greatly appreciated. We would also appreciate receiving any more recent, more accurate, or more representative information. Contact us at the following:



Population, Health and Nutrition Information Project
600 13th Street, NW, Suite 710
Washington, DC 20005

Phone: 202-393-9001

Fax: 202-393-9019

E-mail: dolphnhelp@phnip.com

The PHNI Project, a USAID project managed by Jorge Scientific Corporation, with The Futures Group International and John Snow, Inc., prepared this document under the Data for Decision Making Project (936-3098.01), contract number HRN-C-00-00-00004-00, with the Bureau for Global Health, USAID.

I. Statistical Overview

*see data notes

Demographic Indicators				
Indicator	Value	Data Unit	Year	Source
Total Population	7,527,817		2003	BUCEN-IDB-2002
Population Growth Rate	1.7	%	2003	BUCEN-IDB-2002
Percent Urban	36.3	%	2001	World Bank/WDI-2003
Women, 15-19	463,438		2003	BUCEN-IDB-2002
Women, 15-49	1,789,178		2003	BUCEN-IDB-2002
Life Expectancy at Birth	51.6		2003	BUCEN-IDB-2002
Crude Birth Rate	34.1	per 1,000	2003	BUCEN-IDB-2002
Crude Death Rate	13.4	per 1,000	2003	BUCEN-IDB-2002
Number of Live Births	256,397	000s	2003	BUCEN-IDB-2002

Socioeconomic Indicators				
Indicator	Value	Data Unit	Year	Source
GNI per Capita (PPP)	1,870	\$	2001	World Bank/WDI-2003
Health Expenditure as Percentage of GDP	4.9	%	2000	World Bank/WDI-2003
Physicians per 1,000 People	0.16		1995	World Bank/WDI-2002
Adult Literacy Rate	50.8	%	2001	World Bank/WDI-2003
Adult Literacy Rate, Female	48.9	%	2001	World Bank/WDI-2003
Adult Literacy Rate, Male	52.9	%	2001	World Bank/WDI-2003
Gross Enrollment Rate - Primary School	126	%	1997	UNESCO-2000
Gender Parity Index - Net Enrollment Rate	1		1997	UNESCO-2000
Access to an Improved Water Source (Rural)	45	%	2000	World Bank/WDI-2001
Access to an Improved Water Source (Urban)	49	%	2000	World Bank/WDI-2001
Access to Improved Sanitation Facilities (Rural)	16	%	2000	World Bank/WDI-2001
Access to Improved Sanitation Facilities (Urban)	50	%	2000	World Bank/WDI-2001

Family Planning Indicators				
Indicator	Value	Data Unit	Year	Source
Total Fertility Rate (BUCEN)	4.9		2003	BUCEN-IDB-2002
Total Fertility Rate (DHS)	4.7		2000	Haiti DHS-2000
Contraceptive Prevalence Rate, Modern Methods, All Women	15.4	%	2000	Haiti DHS-2000
Contraceptive Prevalence Rate, Modern Methods, Married Women	22.3	%	2000	Haiti DHS-2000
Median Age of Sexual Debut Among Women, Ages 25-49	18.2		2000	Haiti DHS-2000
Mean Ideal Family Size	3.1		2000	Haiti DHS-2000
Women 20-24 Who Gave Birth Before Age 20	31.3	%	2000	Haiti DHS-2000

Maternal Health Indicators				
Indicator	Value	Data Unit	Year	Source
Maternal Mortality Ratio (WHO/Hill)	1,122	Per 100,000 live births	1995	WHO/Hill-2001
Maternal Mortality Ratio (DHS)	Data Not Available			
Antenatal Care (at least 1 visit)	79.8 ¹	%	2000	Haiti DHS-2000
Antenatal Care (2+ visits)	72.8 ²	%	2000	Haiti DHS-2000
Antenatal Care (4+ visits)	44.2 ³	%	2000	Haiti DHS-2000
Assisted Delivery by a Health Professional	24.2	%	2000	Haiti DHS-2000
Assisted Delivery by Doctor	14.1	%	2000	Haiti DHS-2000
Assisted Delivery by Other Health Professional	10.1	%	2000	Haiti DHS-2000

¹ The value for this country represents data from the five-year period preceding the survey.

² The value for this country represents data from the five-year period preceding the survey.

³ The value for this country represents data from the five-year period preceding the survey.

Child Survival Indicators				
Indicator	Value	Data Unit	Year	Source
Acute Respiratory Infection (ARI) and Oral Rehydration Therapy (ORT)				
ARI Treatment - Children Under 5	26.6	%	2000	Haiti DHS-2000
ORT Use Rate (ORS, RHS, or Increased Fluids)	55	%	2000	Haiti DHS-2000
Mortality Indicators				
Infant Mortality Rate (BUCEN)	76	per 1,000 live births	2003	BUCEN-IDB-2002
Infant Mortality Rate (DHS)	80.3	per 1,000 live births	2000	Haiti DHS-2000
Infant Mortality Rate, Females (BUCEN)	70.2	per 1,000 live births	2003	BUCEN-IDB-2002
Infant Mortality Rate, Males (BUCEN)	81.6	per 1,000 live births	2003	BUCEN-IDB-2002
Under-5 Mortality Rate (BUCEN)	114.3	per 1,000 live births	2003	BUCEN-IDB-2002
Under-5 Mortality Rate (UNICEF)	123	per 1,000 live births	2001	UNICEF-2003
Under-5 Mortality Rate (DHS)	118.6	per 1,000 live births	2000	Haiti DHS-2000
Nutrition Indicators				
Exclusive Breastfeeding (under 4 mos.)	31.8	%	2000	Haiti DHS-2000
Exclusive Breastfeeding (under 6 mos.)	23.6	%	2000	Haiti DHS-2000
Stunted (height-for-age)	22.7	%	2000	Haiti DHS-2000
Underweight (weight-for-age)	17.3	%	2000	Haiti DHS-2000
Wasted (weight-for-height)	4.5	%	2000	Haiti DHS-2000
Vaccination Coverage				
DPT3 Vaccination Rate (DHS)	42.9	%	2000	Haiti DHS-2000
DPT3 Vaccination Rate (WHO)	43	%	2001	WHO/Global Summary-2002
Measles Vaccination Rate (DHS)	53.9	%	2000	Haiti DHS-2000
Measles Vaccination Rate (WHO)	53	%	2001	WHO/Global Summary-2002
Polio Vaccination Rate (DHS)	42.9	%	2000	Haiti DHS-2000
Polio Vaccination Rate (WHO)	43	%	2001	WHO/Global Summary-2002
Tetanus Toxoid Vaccination	52 ¹	%	2000	Haiti DHS-2000

¹ The value for this country represents data from the five-year period preceding the survey.

HIV/AIDS Prevention Indicators				
Indicator	Value	Data Unit	Year	Source
HIV Prevalence, Adults	6.1	%	2001	UNAIDS-2002
HIV Prevalence, Females 15-24, High Estimates	6.7	%	2001	UNAIDS-2002
HIV Prevalence, Females 15-24, Low Estimates	3.2	%	2001	UNAIDS-2002
HIV Prevalence, Males 15-24, High Estimates	5.5	%	2001	UNAIDS-2002
HIV Prevalence, Males 15-24, Low Estimates	2.6	%	2001	UNAIDS-2002
Males Reporting Condom Use With Last Non-Regular Partner	25.5 ¹	%	2000	Haiti DHS-2000
Females Reporting Condom Use With Last Non-Regular Partner	14.4 ²	%	2000	Haiti DHS-2000

Infectious Diseases Control Indicators				
Indicator	Value	Data Unit	Year	Source
TB Estimated Number of Cases	27,159		2001	WHO/TB Control Report-2003
TB Case Detection Rate	49	%	2001	WHO/TB Control Report-2003
TB (DOTS) Treatment Success Rate	73	%	2000	WHO/TB Control Report-2003
Malaria	9,837	Reported # of cases	2001	WHO/RBM-2003

¹ The value for this country represents the percentage of males reporting use of condom at last sexual encounter with any person (cohabitating or not) other than the man's spouse.

² The value for this country represents the percentage of females reporting use of condom at last sexual encounter with any person (cohabitating or not) other than the woman's spouse.

II. Trends in Health Indicators

Figure 1: Current and Projected Population by Age and Sex (in thousands)

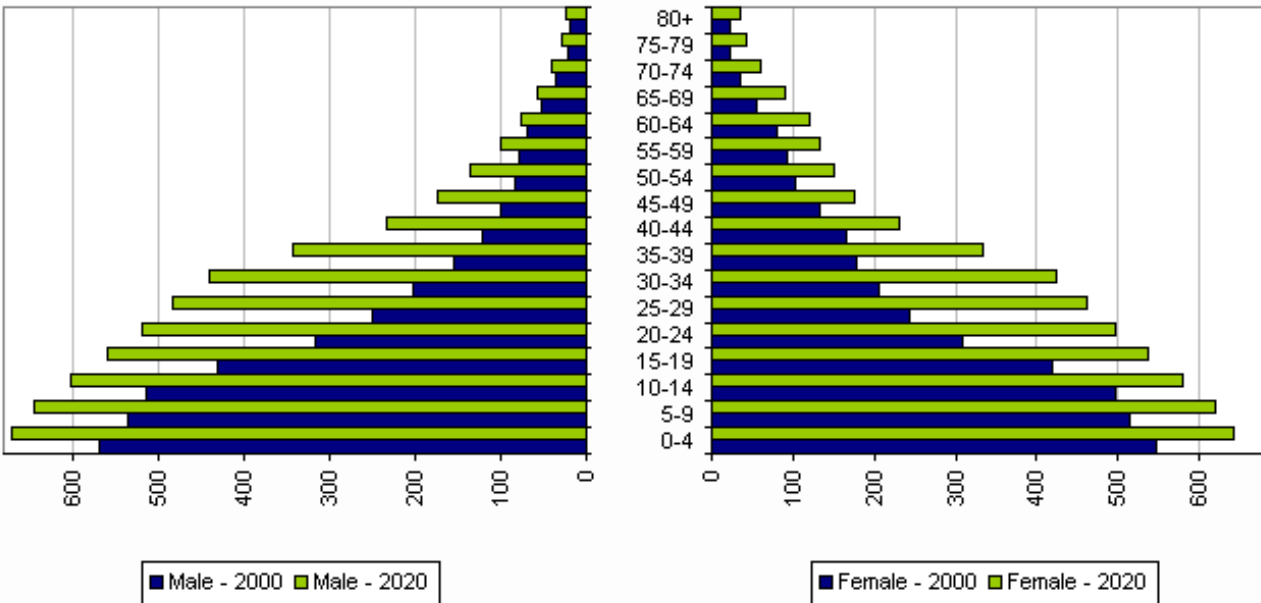


Table 1.1: Current and Projected Population by Age and Sex

Source: BUCEN-IDB

Age Group	Male - 2000	Male - 2020	Female - 2000	Female - 2020
0-4	569,278	670,171	547,851	643,387
5-9	534,996	643,319	515,351	618,790
10-14	513,284	601,803	496,518	579,565
15-19	429,739	557,650	418,797	536,633
20-24	315,540	518,918	307,932	497,929
25-29	250,637	483,584	244,449	462,680
30-34	203,149	440,314	206,115	423,165
35-39	154,938	343,475	178,889	334,427
40-44	122,156	233,294	165,347	230,265
45-49	99,673	173,271	133,611	176,556
50-54	84,046	135,307	102,461	149,948
55-59	78,036	100,288	92,029	132,155
60-64	69,279	75,702	79,671	121,287
65-69	52,262	56,046	55,502	91,435
70-74	35,773	39,829	35,011	60,552
75-79	21,900	28,077	22,531	42,306
80+	17,967	24,179	22,397	35,802

TABLE 1.2: Population Estimates and Projections

Source: BUCEN-IDB

1960	1970	1980	1990	2000	2010	2020	2030	2040	2050
3,722,743	4,604,915	5,055,689	6,074,768	7,177,115	8,554,535	10,262,109	11,872,780	13,454,590	15,083,070

Figure 2: Estimated Total Fertility Rate per Woman

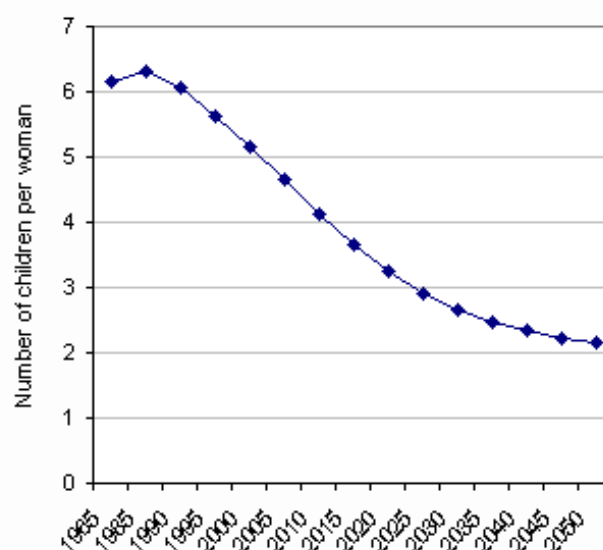


Table 2: Estimated Total Fertility Rate per Woman

Source: BUCEN-IDB

1965	1985	1990	1995	2000	2005	2010	2015	2020	2025	2030	2035	2040	2045	2050
6.2	6.3	6.0	5.6	5.2	4.7	4.1	3.7	3.3	2.9	2.7	2.5	2.3	2.2	2.2

Figure 3: Infant Mortality Rates / Under-5 Mortality Rates

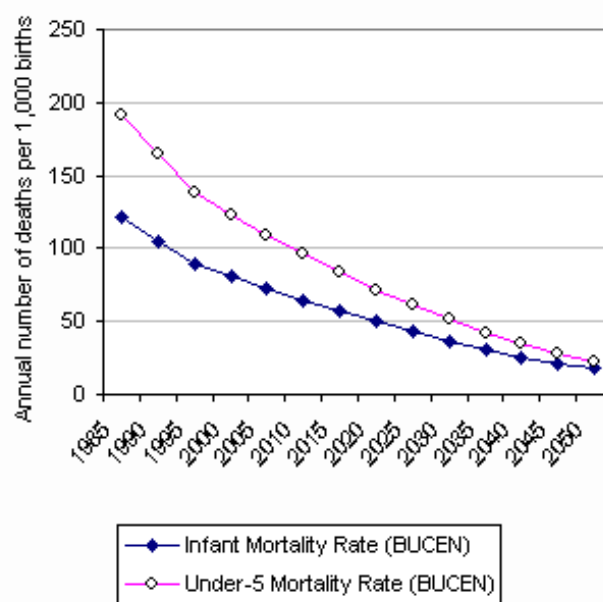


Table 3: Infant Mortality Rates / Under-5 Mortality Rates

Source: BUCEN-IDB 2002

Indicator	1985	1990	1995	2000	2005	2010	2015	2020	2025	2030	2035	2040	2045	2050
Infant Mortality Rate (BUCEN)	121.3	105.4	89.7	81.1	72.8	64.8	57.1	49.9	43.0	36.7	30.9	25.7	21.3	17.6
Under-5 Mortality Rate (BUCEN)	191.7	164.3	137.9	123.0	108.9	95.7	83.3	71.7	61.0	51.2	42.3	34.5	27.9	22.4

Figure 4: Vaccination Coverage (DPT3) Trends

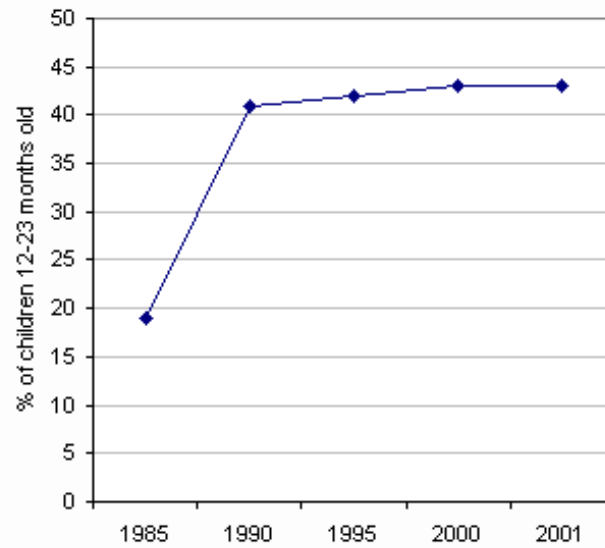


Table 4: Vaccination Coverage (DPT3) Trends

Source: WHO/Global Summary

1985	1990	1995	2000	2001
19.0	41.0	42.0	43.0	43.0

Figure 5: Contraceptive Prevalence Rates, Modern Methods, Married Women

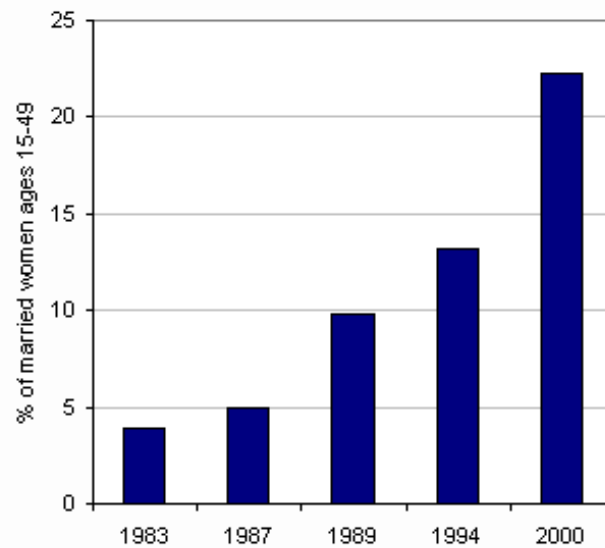


Table 5: Contraceptive Prevalence Rates, Modern Methods, Married Women

Source: Haiti DHS

Ross/TFGI

1983	1987	1989	1994	2000
3.9	5.0	9.8	13.2	22.3

Data Notes

*Indicator definitions that differ from those in the data notes section are identified by footnotes accompanying the indicator tables.

Demographic Indicators

Total Population	The number of people in a given area (i.e., country) in a particular time period (usually a midyear estimate).
Population Growth Rate	The average annual growth rate is the rate of natural increase in a population plus the net migration rate. The rate of natural increase is the difference between the birth rate and the death rate, but it is conventionally measured in percentage terms (per hundred rather than per thousand).
Percent Urban	The percentage of the midyear population living in areas defined as urban in each country and reported to the United Nations.
Women, 15-19	The number of women between the ages of 15-19 in the midyear population.
Women, 15-49	The number of women between the ages of 15-49 in the midyear population.
Life Expectancy at Birth	The average number of years that a person at age 0 will live if age-specific death rates remain constant. Life expectancy at birth is highly affected by rates of infant and child death.
Crude Birth Rate	The number of births per thousand of the population. The product of the number of live births, divided by the midpoint population, multiplied by 1,000.
Crude Death Rate	The number of deaths per thousand of the population. The product of the number of deaths divided by the midpoint population, multiplied by 1,000.
Number of Live Births	The number of live births, annually, within a country.

Socioeconomic Indicators

GNI per Capita (PPP)	The gross national income (GNI) converted to international dollars using purchasing power parity (PPP) rates. An international dollar has the same purchasing power over GNI as a U.S. dollar has in the United States.
Health Expenditure as Percentage of GDP	Total health expenditures is the sum of public and private health expenditures figured as a percentage of a country's gross domestic product (GDP). It covers the provision of health services (preventive and curative), family planning activities, nutrition activities, and emergency aid designated for health but does not include provision of water and sanitation.
Physicians per 1,000 People	Physicians are defined as graduates of any faculty or school of medicine who are working in the country in any medical field (practice, teaching, research).
Adult Literacy Rate	The percentage of people ages 15 and over who can, with understanding, read and write a short, simple statement about their everyday life.
Adult Literacy Rate, Female	The percentage of women ages 15 and over who can, with understanding, read and write a short, simple statement about their everyday life.
Adult Literacy Rate, Male	The percentage of men ages 15 and over who can, with understanding, read and write a short, simple statement about their everyday life.
Gross Enrollment Rate - Primary School	Total enrolment in primary level of education, regardless of age, expressed as a percentage of the official school-age population corresponding to primary level of education in give school-year. GER can be over 100% due to the inclusion of over-aged and under-aged pupils/students because of early or late entrants, and grade repetition.
Gender Parity Index - Net Enrollment Rate	The ratio of the female-to-male net primary school enrollment rates measures progress towards gender equity in school attendance and the level of learning opportunities available for women in relation to those available to men. Calculation Method: Divide the female net primary school enrollment rate by the male net primary school enrollment rate.

Access to an Improved Water Source (Rural)	Access to an improved water source in rural areas. Refers to the percentage of the rural population with reasonable access to an adequate amount of water from an improved source, such as a household connection, public standpipe, borehole, protected well or spring, or rainwater collection. Unimproved sources include vendors, tanker trucks, and unprotected wells and springs. Reasonable access is defined as the availability of at least 20 liters a person a day from a source within one kilometer of the dwelling.
Access to an Improved Water Source (Urban)	Access to an improved water source in urban areas. Refers to the percentage of the urban population with reasonable access to an adequate amount of water from an improved source, such as a household connection, public standpipe, borehole, protected well or spring, or rainwater collection. Unimproved sources include vendors, tanker trucks, and unprotected wells and springs. Reasonable access is defined as the availability of at least 20 liters a person a day from a source within one kilometer of the dwelling.
Access to Improved Sanitation Facilities (Rural)	Access to improved sanitation facilities in rural areas. Refers to the percentage of the rural population with access to at least adequate excreta disposal facilities (private or shared, but not public) that can effectively prevent human, animal, and insect contact with excreta.
Access to Improved Sanitation Facilities (Urban)	Access to improved sanitation facilities in urban areas. Refers to the percentage of the urban population with access to at least adequate excreta disposal facilities (private or shared, but not public) that can effectively prevent human, animal, and insect contact with excreta.

Family Planning Indicators

Total Fertility Rate (BUCEN)	The number of children a woman between ages 15-49 would have during her reproductive life, if, for all of her childbearing years she were to experience the age-specific birth rates for that given year.
Total Fertility Rate (DHS)	The number of children a woman between ages 15-49 would have during her lifetime if she were to bear children at the currently observed rates.
Contraceptive Prevalence Rate, Modern Methods, All Women	Percentage of all women ages 15-49 currently using a modern method of contraception. Modern methods include oral contraceptives, IUDs, injectables, female and male sterilization, all emergency contraception, and barrier methods (diaphragm, foam, jelly, male and female condom).
Contraceptive Prevalence Rate, Modern Methods, Married Women	Percent of currently married ages women 15-49 currently using a modern method of contraception. Modern methods include oral contraceptives, IUDs, injectables, female and male sterilization, all emergency contraception, and barrier methods (diaphragm, foam, jelly, male and female condom).
Median Age of Sexual Debut Among Women, Ages 25-49	Median age of first sexual intercourse for women ages 25-49.
Mean Ideal Family Size	Mean ideal number of children for all women, according to number of living children.
Women 20-24 Who Gave Birth Before Age 20	Percentage of women ages 20-24 who have already given birth.

Maternal Health Indicators

Maternal Mortality Ratio (WHO/Hill)	The estimated number of women who die as a result of pregnancy or childbirth per 100,000 live births arrived through Hill et al., adjustment procedure depending on the nature of data used.
Maternal Mortality Ratio (DHS)	The estimated number of women who die as a result of pregnancy or childbirth per 100,000 live births, arrived mostly through the "sisterhood method". The data are aggregated based on different time periods ranging from four to ten years preceding the survey. Thus, the data may not be suitable for trend analysis due to over-lapping year ranges of estimates. For further information on methodology please refer to: Stanton, Cynthia, Noureddine Abderrahim, and Kenneth Hill. 1997. DHS Maternal Mortality Indicators: An assessment of Data Quality and Implications for Data Use. Calverton: Macro International Inc., or individual country DHS reports.
Antenatal Care (at least 1 visit)	Percentage of women of reproductive age (15-49) who receive at least one antenatal care visit during pregnancy (in the three-year period preceding the survey).
Antenatal Care (2+ visits)	Percentage of women of reproductive age (15-49) who receive at least two antenatal care visits during pregnancy (in the three-year period preceding the survey).

Antenatal Care (4+ visits)	Percentage of women of reproductive age (15-49) who receive four or more antenatal care visits during pregnancy (in the three-year period preceding the survey).
Assisted Delivery by a Health Professional	The percentage of births/deliveries that occur with the assistance of any trained health professional during the five-year period preceding the survey. May include doctors, nurses, midwives, village health workers, or any other trained health professional.
Assisted Delivery by Doctor	The percentage of live births/deliveries that occur with the assistance of a doctor during the five-year period preceding the survey.
Assisted Delivery by Other Health Professional	The percentage of live births/deliveries that occur with the assistance of a nurse, midwife, village health worker, or any other trained health professional besides a doctor during the five-year period preceding the survey.
Child Survival Indicators	
ARI Treatment - Children Under 5	Percentage of children under five years who were ill with an acute respiratory infection (ARI), which is associated with cough, rapid breathing and a high fever, during the two weeks preceding the survey, and who were treated with specific remedies.
ORT Use Rate (ORS, RHS, or Increased Fluids)	Oral Rehydration Therapy (ORT). Percentage of children under age 5 with diarrhea two weeks prior to survey who received increased fluids, oral rehydration solution (ORS) or recommended home solution (RHS).
Infant Mortality Rate (BUCEN)	The estimated annual number of deaths of infants under 12 months in a given year per 1,000 live births in that same year.
Infant Mortality Rate (DHS)	The estimated annual number of deaths of infants under 12 months in a given year per 1,000 live births in that same year (five-year period preceding survey).
Infant Mortality Rate, Females (BUCEN)	The estimated annual number of deaths of female infants under 12 months in a given year per 1,000 live births in that same year.
Infant Mortality Rate, Males (BUCEN)	The estimated annual number of male infants under 12 months in a given year per 1,000 live births in that same year.
Under-5 Mortality Rate (BUCEN)	Annual number of deaths that occur in children 0-4 years old per 1,000 births.
Under-5 Mortality Rate (UNICEF)	Annual number of deaths that occur in children 0-4 years old per 1,000 births (five-year period preceding survey).
Under-5 Mortality Rate (DHS)	Annual number of deaths that occur in children 0-4 years old per 1,000 births (five-year period preceding survey).
Exclusive Breastfeeding (under 4 mos.)	Percentage of children under 4 months exclusively breastfed. Exclusive breastfeeding is defined as providing no food or liquid other than breast milk to the child during the 24-hour period before the survey.
Exclusive Breastfeeding (under 6 mos.)	Percentage of children under 6 months exclusively breastfed. Exclusive breastfeeding is defined as providing no food or liquid other than breast milk to the child during the 24-hour period before the survey.
Stunted (height-for-age)	Percentage of children under age five whose height-for-age is below minus-two standard deviations from the median of the reference population.
Underweight (weight-for-age)	Percentage of children under age five whose weight-for-age is below minus-two standard deviations from the median of the reference population.
Wasted (weight-for-height)	Percentage of children under age five whose weight-for-height is below minus-two standard deviations from the median of the reference population.
DPT3 Vaccination Rate (DHS)	Proportion of living children 12-23 months old who have received three complete doses of vaccines against diphtheria, pertussis, and tetanus.
DPT3 Vaccination Rate (WHO)	Proportion of living children 12-23 months old who have received three complete doses of vaccines against diphtheria, pertussis, and tetanus.

Measles Vaccination Rate (DHS)	Percentage of living children 12-23 months old who have received one dose of MCV (fully immunized against measles).
Measles Vaccination Rate (WHO)	Percentage of living children who have received one dose of MCV (fully immunized) against measles.
Polio Vaccination Rate (DHS)	Proportion of living children 12-23 months who have received three doses of polio vaccine.
Polio Vaccination Rate (WHO)	Percentage of children receiving three doses of polio vaccine.
Tetanus Toxoid Vaccination	Percentage of pregnant women receiving two (or more) doses of tetanus toxoid (three-year period preceding survey).

HIV/AIDS Prevention Indicators

HIV Prevalence, Adults	The estimated number of adults (ages 15-49) living with HIV/AIDS at the end of 1999 divided by the 1999 adult population (ages 15–49).
HIV Prevalence, Females 15-24, High Estimates	HIV prevalence, adolescent females 15-24 for high estimates.
HIV Prevalence, Females 15-24, Low Estimates	HIV prevalence, adolescent females 15-24 for low estimates.
HIV Prevalence, Males 15-24, High Estimates	HIV prevalence, adolescent males 15-24 for high estimates.
HIV Prevalence, Males 15-24, Low Estimates	HIV prevalence, adolescent males 15-24 for low estimates.
Males Reporting Condom Use With Last Non-Regular Partner	Among men who have had sex in the last year, percentage who used condoms during their last sexual intercourse with a non-regular partner/non-cohabitating partner.
Females Reporting Condom Use With Last Non-Regular Partner	Among women who have had sex in the last year, percentage who used condoms during their last sexual intercourse with a non-regular partner/non-cohabitating partner.

Infectious Diseases Control Indicators

TB Estimated Number of Cases	The estimated number of cases (all forms).
TB Case Detection Rate	TB Case Detection Rate is defined as the percentage of the annual new smear-positive notifications of the estimated annual new smear-positive incidence.
TB (DOTS) Treatment Success Rate	The proportion of smear-positive patients who were cured plus the proportion who completed treatment.
Malaria	Reported number of cases of malaria during the year for which data reported.

Statistical Sources For Haiti

BUCEN-IDB 2002	United States Census Bureau (BUCEN), International Programs Center. International Database. October 2002.
Haiti DHS 1994-1995	Institut Haitien de l'Enfance, Petionville et Demographic and Health Surveys, Macro International Inc., Enquete Mortalite, Morbidite et Utilisation des Services (EMMUS-II), Haiti 1994. Macro International Inc., Calverton MD, Dec. 1995.
Haiti DHS 2000	Cayemittes, Michel, Marie Florence Placide, Bernard Barrere, Soumaila Mariko, Blaise Severe. 2001. Enquete Mortalite, Morbidite et Utilisation des Services, Haiti 2000. Calverton, Maryland, USA: Ministere de la Sante Publique et de la Population, Institut Haitien de l'Enfance et ORC Macro.
Ross/TFGI 1999	Ross, John., Stover, John., Willard, Amy. Profiles for Family Planning and Reproductive Health Programs (116 Countries). The Futures Group International. Glastonbury, CT, 1999.
UNAIDS 2002	Report on the Global HIV/AIDS Epidemic. July 2002. The Joint United Nations Programme on HIV/AIDS, Geneva.
UNESCO 2000	UNESCO Education for All 2000 Assessment. United Nations Educational, Scientific and Cultural Organization, Paris.
UNICEF 2003	UNICEF Web site. Progress since the World Summit for Children. www.childinfo.org/cmr/revis/db2.htm . Data accessed on Web site in January 2003.
WHO/Global Summary 2002	WHO Vaccine-Preventable Diseases Monitoring System. 2002 Global Summary. World Health Organization, Geneva.
WHO/Hill 2001	Kenneth Hill, Carla Abou Zahr & Tessa Wardlaw: Estimates of Maternal Mortality for 1995. Bulletin of the World Health Organization, vol. 79, no. 3, 182-193, 2001.
WHO/RBM 2003	WHO-Roll Back Malaria Web site. A Global Partnership. http://www.who.int/rbm . Data accessed on web site in January 2003.
WHO/TB Control Report 2003	Global Tuberculosis Control, WHO Report 2003. World Health Organization, Geneva.
World Bank/WDI 2001	World Bank Development Indicators 2001, CD-Rom. Washington, DC: The World Bank, 2001.
World Bank/WDI 2003	World Bank Development Indicators 2003, CD-Rom. Washington, DC: The World Bank, 2003.

